



<b>Engine</b>	Cummins 6BTAA5.9-C150-II
<b>Rated Power</b>	112 kW (150 hp / 152 ps) @ 1,950 rpm
<b>Net Power</b>	102 kW (137 hp / 139 ps) @ 1,950 rpm
<b>Maximum Dig Depth</b>	11,910 mm
<b>Standard Bucket Capacity</b>	0.45 m <sup>3</sup>
<b>Operating Weight</b>	23,850 kg

# 922E EXCAVATOR

**LONG REACH ARM**

# 922E SPECIFICATIONS >>>

ENGINE	
Manufacturer	Cummins
Model	6BTAA5.9-C150-II
Rated Power	112 kW (150 hp / 152 ps) @ 1,950 rpm
Net Power	102 kW (137 hp / 139 ps) @ 1,950 rpm
Peak Torque	614 N·m @ 1,500 rpm
Number of Cylinders	6
Displacement	5.9 L

UNDERCARRIAGE	
Shoe Width	800 mm
Number of Shoes per Side	49
Number of Upper Rollers per Side	2
Number of Bottom Rollers per Side	8

BOOM & ARM	
Boom Length	8,500 mm
Arm Length	6,400 mm

OPERATING WEIGHT	
Operating Weight	23,850 kg

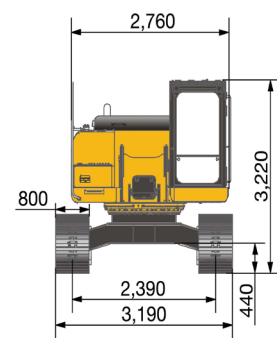
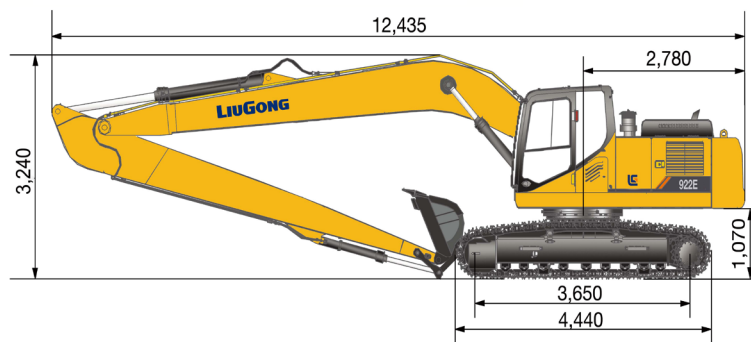
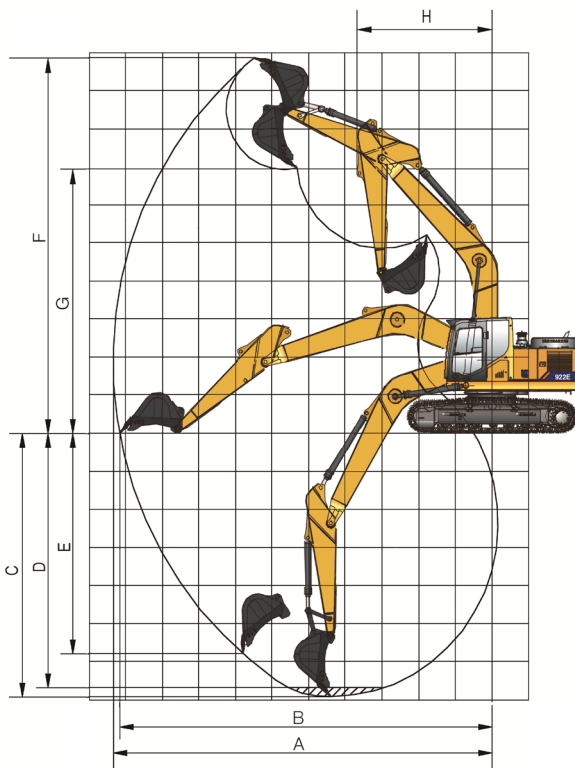
BUCKET PERFORMANCE	
Bucket Heaped Capacity (Referenced)	0.45 m <sup>3</sup>

TRACK DRIVE	
Maximum Travel Speed	5.3 km/h
Drawbar Pull	220 kN

SERVICE CAPACITIES	
Fuel Tank	420 L
Engine Oil	25 L
Cooling System	25 L
Hydraulic Reservoir	210 L
Hydraulic System Total	330 L

HYDRAULIC SYSTEM	
Main Pumps Total Flow	2 x 224 L/min
Relief Pressure, main	34.3 MPa

WORKING RANGE	
A. Max. Digging Reach	15,110 mm
B. Max. Digging Reach on Ground	14,985 mm
C. Max. Digging Depth	11,910 mm
D. Max. Digging Depth, 2.44 m (8') Level	11,785 mm
E. Max. Vertical Wall Digging Depth	9,065 mm
F. Max. Cutting Height	12,780 mm
G. Max. Dumping Height	10,535 mm
H. Min. Front Swing Radius	4,270 mm
Bucket Digging Force (ISO)	70 kN
Arm Digging Force (ISO)	55 kN



## Contact us:

011-306-0700

elb@elbquip.co.za

www.elbequipment.co.za

06/2024 Designed by LiuGong  
Replace the previous versions of 12/2022

Specifications and designs are subject to change without notice. Machines shown may include optional equipment. LiuGong standard and optional equipment may vary from region to region. Please consult your LiuGong dealer for information specific to your area. Engine power kW is converted to horsepower (1 kW=1.3596 ps and 1 kW=1.3410 hp) in this file.