

Sluggit 15 Mix

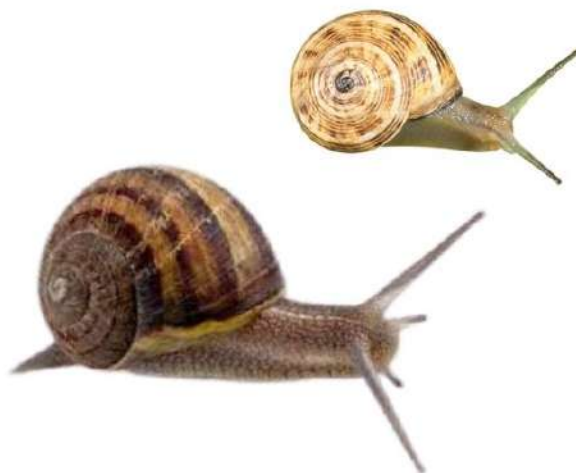
Effective molluscicide.

Sluggit Mix is a 50/50 mix of **Sulggit Pellets**, produced by **Dry Pelletising** and **Sluggit Prima**, produced by **Wet Extruded** process.

The combination of the two products has the following benefits compared to regular pellets:

- Cost effective control
- longer lifespan of product due to better weather resistance and robust qualities of Wet Extruded Pellets
- More baits per Ha and higher density in bait distribution leading to more effective snail control.

Sluggit Mix, with **metaldehyde (15g/kg)** is recommended when specific **control of only slugs and snails** is needed. The single-active formulation will not be effective in the control of other pests or insects.



Use Mix For Better Protection

- High quality ingredients.
- Weather resistant up to 21 days
- Highly palatable
- Small Pellets size providing more baits per Ha and even distribution

Specifications

Appearance	Green pellets
Average Bait Size Pellets	2.2mm diam, 4 - 5 mm long
Average Bait Size Wet Extruded	2.2mm diam, 2.2 mm long
Baits/kg	More than 75 000
Metaldehyde Content	15g/kg
Available Pack Size	25kg 500kg 1 000kg
Process	Dry pelletising & Wet Extrusion
Shelf Life	2 years

