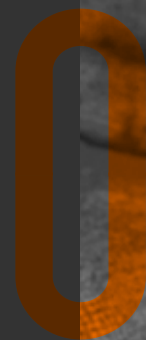




# Heavy Duty Linkage



# Introducing our range of heavy duty linkage products

Adding to our range of heavy duty linkage balls, we have now extended the range to include bushes, shears, and pins.

Our blackline of heavy duty linkage items go through the cathodic electrode deposition process. This means that they are coated and have 7 times longer corrosion and external effect protection in comparison to the standard range of products.

Perfect for your dealership, to view the entire range, scan this QR code.



A heavy duty part will reduce the risk of breakages and machine downtime



## Top link pins

Part No.	Description	Standard Part No.
S.164562	Top link pin 19x76mm Cat. 1 Heavy Duty	S.73
S.164565	Top link pin 19x92mm Cat. 1 Heavy Duty	S.75
S.164566	Top link pin 19x102mm Cat. 1 Heavy Duty	S.74
S.164568	Top link pin 19x127mm Cat. 1 Heavy Duty	S.77
S.164570	Lower link pin 22x78mm Cat. 1 Heavy Duty	S.109
S.164571	Lower link pin 22x95mm Cat. 1 Heavy Duty	S.54
S.164573	Lower link pin 22x116mm Cat. 1 Heavy Duty	S.11360
S.164575	Lower link pin 22x149mm Cat. 1 Heavy Duty	S.72
S.164576	Top link pin 25x75mm Cat. 2 Heavy Duty	S.427
S.164577	Top link pin 25x83mm Cat. 2 Heavy Duty	S.79
S.164578	Top link pin 25x97mm Cat. 2 Heavy Duty	S.76
S.164579	Top link pin 25x102mm Cat. 2 Heavy Duty	S.69
S.164580	Top link pin 25x110mm Cat. 2 Heavy Duty	S.81
S.164582	Top link pin 25x142mm Cat. 2 Heavy Duty	S.80
S.164583	Lower link pin 28x95mm Cat. 2 Heavy Duty	S.5033
S.164585	Lower link pin 28x115mm Cat. 2 Heavy Duty	S.140547
S.164586	Lower link pin 28x130mm Cat. 2 Heavy Duty	S.29255
S.164587	Lower link pin 28x178mm Cat. 2 Heavy Duty	S.112
S.164588	Top link pin 32x125mm Cat. 3 Heavy Duty	S.3026

## Top link pins

Part No.	Description	Standard Part No.
S.164563	Top link pin 19x76mm Cat. 1 Heavy Duty	S.15012
S.164564	Top link pin 19x88mm Cat. 1 Heavy Duty	S.29230
S.164567	Top link pin 19x114mm Cat. 1 Heavy Duty	S.29231
S.164569	Top link pin 19x166mm Cat. 1 Heavy Duty	S.29232
S.164572	Lower link pin 22x100mm Cat. 1 Heavy Duty	S.29241
S.164574	Lower link pin 22x128mm Cat. 1 Heavy Duty	S.29242
S.164581	Top link pin 25x118mm Cat. 2 Heavy Duty	S.15028
S.164584	Lower link pin 28x113mm Cat. 2 Heavy Duty	S.9162
S.164589	Top link pin 32x141mm Cat. 3 Heavy Duty	S.12336
S.164590	Lower link pin 36x134mm Cat. 3 Heavy Duty	S.9168



Existing

New

# Balls & Bushes



## Conversion Bushes

Part No.	Description	Standard Part No.
S.164520	Top Link Conversion Bush (Cat. 2 to 1) Heavy Duty	S.353
S.164523	Top Link Conversion Bush (Cat. 3 to 2) Heavy Duty	S.3008
S.164522	Lower Link Conversion Bush (Cat. 2 to 1) Heavy Duty	S.351
S.164521	Lower Link Conversion Bush (Cat. 3 to 2) Heavy Duty	S.3009



## Linkage Balls

Part No.	Description	Standard Part No.
S.148199	Heavy Duty Top Link Ball (Cat. 2/2)	S.33008
S.148196	Heavy Duty Top Link Ball (Cat. 3/2)	S.33004
S.148197	Heavy Duty Top Link Ball (Cat. 3/3)	S.33010
S.118459	Heavy Duty Top Link Ball (Cat. 4/3)	-
S.118460	Heavy Duty Top Link Ball (Cat. 4/4)	-
S.148194	Heavy Duty Lower Link Ball (Cat. 2/2)	S.33005
S.148192	Heavy Duty Lower Link Ball (Cat. 3/2)	S.33006
S.148193	Heavy Duty Lower Link Ball (Cat. 3/3)	S.33007
S.148201	Heavy Duty Lower Link Ball (Cat. 4/3)	-
S.148202	Heavy Duty Lower Link Ball (Cat. 4/4)	-
S.148198	Heavy Duty Lower Link Ball, Guide Cone and Linch Pin (Cat. 2/2)	S.33000
S.148195	Heavy Duty Lower Link Ball, Guide Cone and Linch Pin (Cat. 3/2)	S.33001
S.148200	Heavy Duty Lower Link Ball, Guide Cone and Linch Pin (Cat. 3/3)	S.33002

New

# Double Shear & Dual Category Pins



S.164524



S.164531

S.164532

## Double shear pins

Part No.	Description	Standard Part No.
S.164524	Top link pin - Double shear 19x123mm Cat.1 Heavy Duty	S.8858
S.164525	Lower link pin - Double shear 22x123mm Cat.1 Heavy Duty	S.8859
S.164526	Top link pin - Double shear 25x123mm Cat.2 Heavy Duty	S.8860
S.164527	Lower link pin - Double shear 28x123mm Cat.2 Heavy Duty	S.8861
S.164528	Lower link pin - Double shear 30x123mm Cat.30mm Heavy Duty	S.29238
S.164529	Top link pin - Double shear 32x135mm Cat.3 Heavy Duty	S.21660
S.164530	Lower link pin - Double shear 36x175mm Cat.3 Heavy Duty	S.21664

## Dual category pins

Part No.	Description	Standard Part No.
S.164531	Top link pin - Dual category 19 - 25mm Cat.1/2 Heavy Duty	S.3539
S.164532	Top link pin - Dual category 19 - 25mm Cat.1/2 Heavy Duty	S.3234
S.164533	Lower link pin - Dual category 22 - 28mm Cat.1/2 Heavy Duty	S.3540
S.164534	Lower link pin - Dual category 22 - 28mm Cat.1/2 Heavy Duty	S.16338
S.164535	Lower link pin - Dual category 22 - 28mm Cat.1/2 Heavy Duty	S.11874
S.164536	Top link pin - Dual category 25 - 32mm Cat.2/3 Heavy Duty	S.14412
S.164537	Top link pin - Dual category 25 - 32mm Cat.2/3 Heavy Duty	S.14413
S.164538	Lower link pin - Dual category 28 - 36mm Cat.2/3 Heavy Duty	S.29235



New

# Hitch & lower implement pins



## Hitch Pins with Chain & Linch Pin

Part No.	Description	Standard Part No.
S.164539	Hitch Pin with Chain & Linch Pin 16x98mm Heavy Duty	S.16738
S.164540	Hitch Pin with Chain & Linch Pin 19x98mm Heavy Duty	S.408
S.164541	Hitch Pin with Chain & Linch Pin 19x157mm Heavy Duty	S.404
S.164542	Hitch Pin with Chain & Linch Pin 22x157mm Heavy Duty	S.405
S.164543	Hitch Pin with Chain & Linch Pin 25x157mm Heavy Duty	S.410
S.164544	Hitch Pin with Chain & Linch Pin 25x183mm Heavy Duty	S.432
S.164545	Hitch Pin with Chain & Linch Pin 28.6x183mm Heavy Duty	S.412
S.164546	Hitch Pin with Chain & Linch Pin 30x157mm Heavy Duty	S.52077
S.164547	Hitch Pin with Chain & Linch Pin 32x183mm Heavy Duty	S.415
S.164548	Hitch Pin with Chain & Linch Pin 35x183mm Heavy Duty	S.15358
S.164549	Hitch Pin with Chain & Linch Pin 38x190mm Heavy Duty	S.15360

## Lower link implement pins

Part No.	Description	Standard Part No.
S.164550	Lower link implement pin dual 22 - 28x191mm, Thread size: 1x32mm Heavy Duty	S.213
S.164551	Lower link implement pin dual 22 - 28x197mm, Thread size: 7/8x38mm Heavy Duty	S.206
S.164552	Lower link implement pin 22x140mm, Thread size 5/8"x43mm Cat. 1 Heavy Duty	S.199
S.164553	Lower link implement pin dual 22x140mm, Thread size 3/4"x48mm	S.198
S.164554	Lower link implement pin 22x140mm, Thread size 7/8"x40mm Cat. 1 Heavy Duty	S.200
S.164555	Lower link implement pin dual 28x141mm, Thread size 3/4"x36mm	S.196
S.164556	Lower link implement pin 28x137mm, Thread size 7/8"x35mm Cat. 2 Heavy Duty	S.202
S.164557	Lower link implement pin dual 28x149mm, Thread size 3/4"x54mm	S.197
S.164558	Lower link implement pin 28x149mm, Thread size 7/8"x38mm Cat. 2 Heavy Duty	S.203
S.164559	Lower link implement pin dual 28x149mm, Thread size 1"x51mm	S.5191
S.164560	Lower link implement pin dual 28x159mm, Thread size 1 1/8"x60mm	S.3006
S.164561	Lower link implement pin 36x149mm, Thread size 1 1/8"x48mm Cat. 3 Heavy Duty	S.3005

